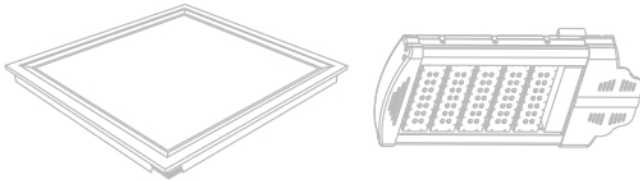
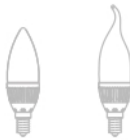


LED LIGHTING HOW TO BUY

save energy &
protect environment



HS SWITCHGEAR FZCO, JEBEL ALI FREE ZONE
DUBAI, U.A.E, P.O.BOX : 117209
Tel : +971 4 8886980, Fax : +971 4 8886014
Email : sales@hslights.ae
Web: www.hslights.ae

ABOUT US

Manufacture of LED lights at Jebel Ali, Dubai.

HS Lights FZCO is a professional manufacturer engaged in the researching, developing, manufacturing and selling of LED Light.

Considering mainly Retrofit activities in the UAE & the Middle East demand the HS Lights factory is formed. HS Light is the first fully equipped LED assembly factory in UAE. Complete in-house facility from R&D stage to manufacturing.

Wide range of products to suit various customer needs. HS Lights provide the most versatile, best in class and cost effective LED Lighting solutions for various applications.

The main products include: LED Spot Light, LED Down Lights, LED Candle Bulbs, LED Panel Light, LED Tube Light, LED Dimmable Light, Street Lights and other Indoor & Outdoor Lighting.

Business Philolousaphy

HS Lights have a proven track record of helping utilities & companies realize the potential business benefits of LED Lighting Technology.

Quality Commitment

All our products are manufactured strictly according to ISO9001 standard.

We have developed and introduced advanced technique and test standard, which assures our products of high quality.

CONTENTS

1	LED Introduction.....	3
2	Upgrade your lights.....	4
3	Cost comparison.....	5
4	Illuminance Categories and Illuminace Values.....	6
5	Environmental Protection.....	7
6	How to choose your LED Tube.....	9
7	LED Tube Light	11
8	How to choose your LED Bulb.....	23
9	LED Bulb, Spot and Candle Light	13
10	LED Corn Light	17
11	LED Down Light	21
12	LED Slim Down Light	23
13	LED Panel Light.....	25
14	LED Flood Light	27
15	LED Stadium Light	33
16	LED HighBay and Emergency Light	37
17	LED Street Light and Solar Street Light.....	39
18	LED Retro Fit Kit Light.....	47
19	LED TRI-Proof, Linear and Strip Light	53

LED Introduction

LED (Light Emitting Diode) is a semiconductor light source which conquets electricity to light and it presents many advantages over incandescent light source including lower energy consumption, longer lifetime, improved physical robustness, smaller size and faster switching.

LED Lighting Advantages

- **Lower energy consumption** : lower than incandescent light up to 90%.
- **Longer lifetime** : Over 30,000 hrs lifetime. (1000 hrs for incandescent, 6000 hrs for fluorescent)
- **Healthy** : No UV, IR and radiation. (High pressure sodium lamp contains UV and IR)
- **Green product** : No toxic substances such as Mercury and Xeon and no Elctromagnetic Interference (EMI).
- **Vision protection** : DC drive, no flicker.
- **High luminous efficiency** : 60% of electric to visible light conversion ratio for LED lighting.(85% for heat, only 5% for visible light for incandescent lamp.)

As a green product, LED lighting is becoming the new generation lighting for 21st century.



Upgrading your lights to LED lighting NOW

21st Century LED Lighting

Energy saving
High efficiency
Comfort and long lifetime



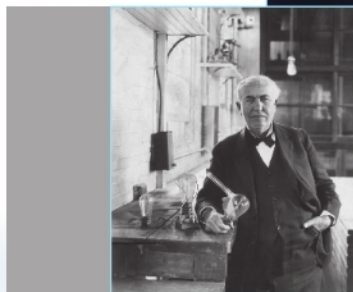
1970s Compact Fluorescent lamp

Toxic substance and fragile



1880s Incandescent lamp

Low efficiency and high power consumption



Cost comparison



Power Consumption	60W	20W	9W
Luminous Flux	600 lm	1000lm	800 lm
Luminous Efficiency	10 lm/W	50 lm/W	90 lm/W
Toxic Substance	YES	YES (Mercury)	NO
Life Time (hours)	1000	6000	25,000+
Response Time	Slow	Slow	Fast
Electric Cost Yearly in USD	\$ 32.85	\$ 10.95	\$ 4.9275

◆ The cost of electricity is based on a usage of 10 hours a day, 365 days a year, the U.S. average per kilowatt of highest from \$0.85.

Illuminance Categories and Illuminance Values

Residences Lighting Power Density Value				Shopping Lighting Power Density Value				
Area	Lighting Power Density(W/m²)		Corresponding illumination(Lx)	Area	Lighting Power Density(W/m²)		Corresponding illumination(Lx)	
	Current Rate	Ideal Rate			Current Rate	Ideal Rate		
Living Room	7	6	100	General Merchandising Spaces	12	10	300	
BedRoom			75	Convenient Store	19	16	500	
Dining Room			150		Shopping Mall	13	11	300
Kitchen			200			General Supermarket	20	17
Toilet and washrooms			200					
Hotels Lighting Power Density Value				Offices Lighting Power Density Value				
Area	Lighting Power Density(W/m²)		Corresponding illumination(Lx)	Area	Lighting Power Density(W/m²)		Corresponding illumination(Lx)	
	Current Rate	Ideal Rate			Current Rate	Ideal Rate		
Lobby	15	13	100	General Office	11	9	300	
Dining Room	13	11	200	Accounting	18	15	500	
Multi-functional Room	18	15	300					
Corridors,elevators and Stairs	15	13	100	Photograph, moderate details				
Front Desk	18	15	500	Meeting Room	11	9	300	
Industrial Lighting Power Density Value				Operation Hall	13	11	500	
Area	Lighting Power Density(W/m²)		Corresponding illumination(Lx)	Copied Tasks	11	9	500	
	Current Rate	Ideal Rate		Files Room	8	7	200	
General Laboratories	12	11	500	Educational facilities Lighting Power Density Value				
Research & Development Laboratories	18	15	750	Area	Lighting Power Density(W/m²)		Corresponding illumination(Lx)	
Measurement Room	18	15	750		Current Rate	Ideal Rate		
Storage for mega Size Goods	5	4	150	Classrooms	12	11	500	
Storage for Small handy Parts	8	7	300	Reading Rooms	12	11	500	
Gas Station	6	5	150	Sciencec Laboratories	18	15	750	
Roughing Machining	8	7	300	Multifnctional Rooms	12	11	500	
				Lecture Rooms	27	24	1000	
General Machining	12	11	500	Health Care Facilities Lighting Power Density Value				
Precised Machining	19	17	750	Area	Lighting Power Density(W/m²)		Corresponding illumination(Lx)	
General Electrical Equipment Manufacturing	12	11	500		Current Rate	Ideal Rate		
				General Patients' Rooms	5	4	200	
Precised Electrical Equipment Manufacturing	19	17	750	General Work Area	8	7	300	
				Examination and Treatment Rooms	12	11	500	
Extra Precised Electrical Equipment Manufacturing	27	24	1000~2000	Nursing Station	12	11	500	
				Critical Patients' Rooms	12	11	500	
General Electrical Equipment Repairing	8	7	300	Pharmacy	12	11	500	
				Critical care areas	19	17	750	
Precised Electrical Equipment Repairing	12	11	500	Emergency outpatient	19	17	750	
				Surgical Operation Rooms	27	24	1000~2000	

*The above table is a consolidated listing of the IESNA's current illuminance recommendation.
*This listing is intended to guide the designer in selecting an appropriate illuminance.

HS Lights LED Environmental Protection

Keep quality standards high, develop by high efficiency and place customer satisfaction as our top priority are HS Lights quality commitments. Providing high technology solutions and comprehensively products are the best way to service our customers.

Base on the same luminance, LED lighting power consumption is much lower then incandescent lamp and substantially reduces CO₂ emissions, besides, over 25,000 hours lifetime which compares with 6,000 hours for CFL lamp and 1,000 hours for incandescent lamp that indicate energy saving and cost saving for LED lighting. Toxic substance free and recyclable green products are the way to protect our environment.



Do you know?

Using HS Lights LED lighting can save
over **80%** electricity cost for lighting.



How to choose your LED Tube

Step 1 :

Choose your fitting and connector



G13 lamp holder



Integrated lamp holder



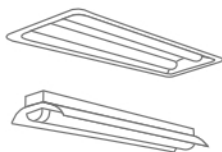
Integrated lamp holder

- ◆ Forest Lighting Tube series products almost can replace all series tube in the market. To find the correct size and connector is the first thing to do before you buy the tubes.

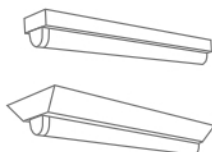
Step 2 :

Choose your fixtures

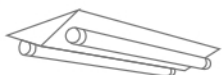
1



2



3



Step 3 :

Choose the lumens and power consumptions.



Fluorescent T8



LED T8



Fluorescent T5

Total Power Consumption (including LED & driver)	36 W	19 W	28 W
Total initial luminous flux	2600 lm	1700 lm	2550 lm
Light output ratio (L.O.R)	55%	90%	60%
Effective lumen	1430 lm	1530 lm	1530 lm

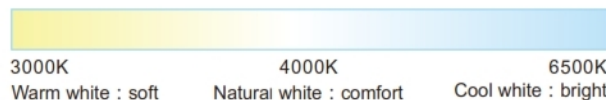
Based on using directional fixtures, L.O.R=55%. ◆

Step 4 :

Choose the color temperature



The unit of color temperature is "Kelvin or K" ◆
Higher Kelvin means cooler color temperature. ◆



LED Tube

LED Source SMD



10W Tube Aluminium+Glass

HSL-TL01-0010 **CE RoHS**

Power	: 10W
Input Voltage	: AC100-240V
Frequency	: 50/60Hz
CCT	: 2800-6500K
CRI	: Ra>80
Luminous Flux	: 850lm



25W Tube Aluminium+Glass

HSL-TL01-0025 **CE RoHS**

Power	: 25W
Input Voltage	: AC100-240V
Frequency	: 50/60Hz
CCT	: 2800-6500K
CRI	: Ra>80
Luminous Flux	: 2700lm



14W Tube Aluminium+Glass

HSL-TL01-0014 **CE RoHS**

Power	: 14W
Input Voltage	: AC100-240V
Frequency	: 50/60Hz
CCT	: 2800-6500K
CRI	: Ra>80
Luminous Flux	: 1500lm



30W Tube Aluminium+Glass

HSL-TL01-0030 **CE RoHS**

Power	: 30W
Input Voltage	: AC100-240V
Frequency	: 50/60Hz
CCT	: 2800-6500K
CRI	: Ra>80
Luminous Flux	: 3200lm



18W Tube Aluminium+Glass

HSL-TL01-0018 **CE RoHS**

Power	: 18W
Input Voltage	: AC100-240V
Frequency	: 50/60Hz
CCT	: 2800-6500K
CRI	: Ra>80
Luminous Flux	: 1530lm

How to choose your LED Bulb

Step 1 :

Choose your fitting and form

Fitting



B22 E26 E27 E14 E12

Shape



LED Candelabra

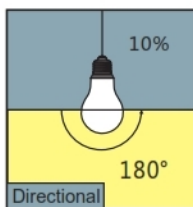
LED Bulbs

- ◆ Forest Lighting LED bulb series can almost replace all the bulbs in the market. To find the correct fitting and form is the first thing to do before your purchasing.

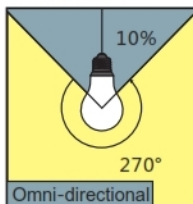
Step 2:

Choose your application

- ◆ Directional lighting
The LED lamp shall have an even distribution of luminous intensity within the 0 to 180 degree zone as the picture.



- ◆ Omni-directional lighting
The LED lamp shall have an even distribution of luminous intensity within the 0 to 270 degree and shall not differ more than 20%. More than 10% luminous intensity will left within 270 to 360 degree zone as the picture.



Step 3 :

Choose the LED with appropriate lumen & power.

80% energy saving vs. Incandescent lamp			50% energy saving vs. CFL lamp			
Incandescent Lamp			LED Lamp		CFL Lamp	
Power consumption	Directional (lm)	Omni-directional (lm)	Directional (W)	Omni-directional (W)	Directional (W)	Omni-directional (W)
15W	150	—	—	—	5W	10W
25W	250	200	3W	—	7W	14W
40W	400	450	6W	6W	9W	18W
60W	600	600/800	9W	9W	15W	30W
75W	750	1100	13W	13W		
100W	1000	1600	20W	18W		

Based on using directional fixtures, L.O.R=55%.

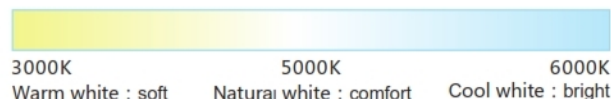
Reference by ES Program Requirements for Integral LED lamps version 1.4 ◆

Step 4 :

Choose the color temperature



The unit of color temperature is "Kelvin or K" ◆
Higher Kelvin means cooler color temperature. ◆



LED Bulbs

LED Source COB



3W Bulb

HSL-BL01-0003 **CE RoHS**

Power :	3W
Input Voltage :	AC100-240V
Frequency :	50/60Hz
CCT :	6000-6500K
CRI :	Ra>80
Luminous Flux :	240lm



5W Bulb

HSL-BL01-0005 **CE RoHS**

Power :	5W
Input Voltage :	AC100-240V
Frequency :	50/60Hz
CCT :	6000-6500K
CRI :	Ra>80
Luminous Flux :	400lm



7W Bulb

HSL-BL01-0007 **CE RoHS**

Power :	7W
Input Voltage :	AC100-240V
Frequency :	50/60Hz
CCT :	6000-6500K
CRI :	Ra>80
Luminous Flux :	560lm



9W Bulb

HSL-BL01-0009 **CE RoHS**

Power :	9W
Input Voltage :	AC100-240V
Frequency :	50/60Hz
CCT :	6000-6500K
CRI :	Ra>80
Luminous Flux :	720lm

LED Candle

LED Source COB



3.5W Candle

HSL-CL01-0035 **CE RoHS**

Power :	3.5W
Input Voltage :	AC100-240V
Frequency :	50/60Hz
CCT :	2700-6500K
CRI :	Ra>80
Luminous Flux :	300lm

LED Spot

LED Source COB



5W Spot

HSL-SPL01-0005 **CE RoHS**

Power :	5W
Input Voltage :	AC100-240V
Frequency :	50/60Hz
CCT :	2800-6500K
CRI :	Ra>80
Luminous Flux :	460lm

LED Corn LED Source SMD



7W Bulb

HSL-CL01-0007 **CE RoHS**

Power :	7W
Input Voltage :	AC100-277V
Frequency :	50/60Hz
CCT :	2700-8000K
CRI :	Ra>80
Luminous Flux :	770lm



15W Bulb

HSL-CL01-0015 **CE RoHS**

Power :	15W
Input Voltage :	AC100-277V
Frequency :	50/60Hz
CCT :	2700-8000K
CRI :	Ra>80
Luminous Flux :	1650lm



9W Bulb

HSL-CL01-0009 **CE RoHS**

Power :	9W
Input Voltage :	AC100-277V
Frequency :	50/60Hz
CCT :	2700-8000K
CRI :	Ra>80
Luminous Flux :	990lm



20W Bulb

HSL-CL01-0020 **CE RoHS**

Power :	20W
Input Voltage :	AC100-277V
Frequency :	50/60Hz
CCT :	2700-8000K
CRI :	Ra>80
Luminous Flux :	2200lm



12W Bulb

HSL-CL01-0012 **CE RoHS**

Power :	12W
Input Voltage :	AC100-277V
Frequency :	50/60Hz
CCT :	2700-8000K
CRI :	Ra>80
Luminous Flux :	1320lm



30W Bulb

HSL-CL01-0030 **CE RoHS**

Power :	30W
Input Voltage :	AC100-277V
Frequency :	50/60Hz
CCT :	2700-8000K
CRI :	Ra>80
Luminous Flux :	4400lm

LED Corn LED Source SMD



40W Corn

HSL-CL01-0040 **CE RoHS**

Power :	40W
Input Voltage :	AC100-277V
Frequency :	50/60Hz
CCT :	2700-8000K
CRI :	Ra>80
Luminous Flux :	4400lm



100W Corn

HSL-CL01-0100 **CE RoHS**

Power :	100W
Input Voltage :	AC100-277V
Frequency :	50/60Hz
CCT :	2700-8000K
CRI :	Ra>80
Luminous Flux :	1100lm



60W Corn

HSL-CL01-0060 **CE RoHS**

Power :	60W
Input Voltage :	AC100-277V
Frequency :	50/60Hz
CCT :	2700-8000K
CRI :	Ra>80
Luminous Flux :	6600lm



120W Corn

HSL-CL01-0120 **CE RoHS**

Power :	120W
Input Voltage :	AC100-277V
Frequency :	50/60Hz
CCT :	2700-8000K
CRI :	Ra>80
Luminous Flux :	13200lm



80W Corn

HSL-CL01-0080 **CE RoHS**

Power :	80W
Input Voltage :	AC100-277V
Frequency :	50/60Hz
CCT :	2700-8000K
CRI :	Ra>80
Luminous Flux :	8800lm



150W Corn

HSL-CL01-0150 **CE RoHS**

Power :	150W
Input Voltage :	AC100-277V
Frequency :	50/60Hz
CCT :	2700-8000K
CRI :	Ra>80
Luminous Flux :	16500lm

How to choose your LED Down Light

Step 1 :

Choose the lumens and power consumptions

LED Down light		Fixture product of Down light + CFL Lamp	
Power Consumption	Luminous Flux	Power Consumption	Luminous Flux
3W	150 lm	9W	150 Lm
5W	400 lm	15W	240 Lm
7W	560 lm	20W	300 Lm
9W	720 lm	30W	820 Lm
12W	960 Lm	36W	990 Lm
15W	1200 Lm	40W	1100 Lm
20W	1600 Lm	60W	1600 Lm

Based on using directional fixtures, L.O.R=55%
Reference by ES Requirements for integral LED lamps version 1.4

Step 2 :

Choose your size :

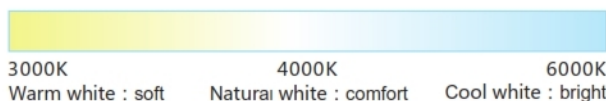
- 1** 2.5 inch **2** 3 inch **3** 3.5 inch **4** 4 inch
5 5 inch **6** 6 inch **7** 8 inch

Step 3 :

Choose the color temperature



The unit of color temperature is "Kelvin or K" ♦
Higher Kelvin means cooler color temperature. ♦



LED DOWN LIGHT

LED Source COB



10W Down Light

HSL-DL01-0010 **CE RoHS**

Power	: 10W
Input Voltage	: AC100-240V
Frequency	: 50/60Hz
CCT	: 6000-6500K
CRI	: Ra>75
Luminous Flux	: 800lm



15W Down Light

HSL-DL01-0015 **CE RoHS**

Power	: 15W
Input Voltage	: AC100-240V
Frequency	: 50/60Hz
CCT	: 6000-6500K
CRI	: Ra>75
Luminous Flux	: 1200lm



20W Down Light

HSL-DL01-0020 **CE RoHS**

Power	: 20W
Input Voltage	: AC100-240V
Frequency	: 50/60Hz
CCT	: 6000-6500K
CRI	: Ra>75
Luminous Flux	: 1600lm



30W Down Light

HSL-DL01-0030 **CE RoHS**

Power	: 30W
Input Voltage	: AC100-240V
Frequency	: 50/60Hz
CCT	: 6000-6500K
CRI	: Ra>75
Luminous Flux	: 2400lm

LED SLIM DOWN

LED Source SMD



9W SLIM Down

HSL-SDL01-0009 **CE RoHS**

Power :	9W
Input Voltage :	AC100-240V
Frequency :	50/60Hz
CCT :	3000-6000K
CRI :	Ra>80
Luminous Flux :	630lm



18W SLIM Down

HSL-SDL01-0018 **CE RoHS**

Power :	18W
Input Voltage :	AC100-240V
Frequency :	50/60Hz
CCT :	3000-6000K
CRI :	Ra>80
Luminous Flux :	1250lm



12W SLIM Down

HSL-SDL01-0012 **CE RoHS**

Power :	12W
Input Voltage :	AC100-240V
Frequency :	50/60Hz
CCT :	3000-6000K
CRI :	Ra>80
Luminous Flux :	840lm



20W SLIM Down

HSL-SDL01-0020 **CE RoHS**

Power :	20W
Input Voltage :	AC100-240V
Frequency :	50/60Hz
CCT :	3000-6000K
CRI :	Ra>80
Luminous Flux :	1400lm



15W SLIM Down

HSL-SDL01-0015 **CE RoHS**

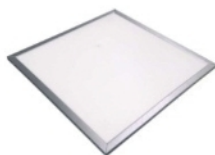
Power :	15W
Input Voltage :	AC100-240V
Frequency :	50/60Hz
CCT :	3000-6000K
CRI :	Ra>80
Luminous Flux :	1050lm

LED Panel

LED Source SMD

40W Panel Light 60cm x 60cm

HSL-PL01-0040 **CE RoHS**



Power	: 40W
Input Voltage	: AC100-240V
Frequency	: 50/60Hz
CCT	: 2800-6000K
CRI	: Ra>80
Luminous Flux	: 3500lm

70W Panel Light 120cm x 60cm

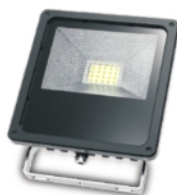
HSL-PL01-0070 **CE RoHS**



Power	: 70W
Input Voltage	: AC100-240V
Frequency	: 50/60Hz
CCT	: 2800-6000K
CRI	: Ra>80
Luminous Flux	: 5900lm

LED FLOOD Type 1

LED Source SMD



20W Flood Light

HSL-FL01-0020 **CE RoHS**

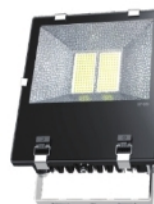
Power	: 20W
Input Voltage	: AC100-240V
Frequency	: 50/60Hz
CCT	: 2700-6500K
CRI	: Ra>80
Luminous Flux	: 1900lm
Waterproof Rating	: IP65



70W Flood Light

HSL-FL01-0070 **CE RoHS**

Power	: 70W
Input Voltage	: AC100-240V
Frequency	: 50/60Hz
CCT	: 2700-6500K
CRI	: Ra>80
Luminous Flux	: 7000lm
Waterproof Rating	: IP65



100W Flood Light

HSL-FL01-0100 **CE RoHS**

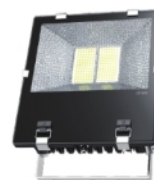
Power	: 100W
Input Voltage	: AC100-240V
Frequency	: 50/60Hz
CCT	: 2700-6500K
CRI	: Ra>80
Luminous Flux	: 1000lm
Waterproof Rating	: IP65



30W Flood Light

HSL-FL01-0030 **CE RoHS**

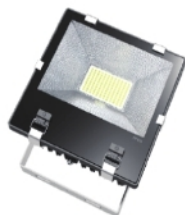
Power	: 30W
Input Voltage	: AC100-240V
Frequency	: 50/60Hz
CCT	: 2700-6500K
CRI	: Ra>80
Luminous Flux	: 2850lm
Waterproof Rating	: IP65



150W Flood Light

HSL-FL01-0150 **CE RoHS**

Power	: 150W
Input Voltage	: AC100-240V
Frequency	: 50/60Hz
CCT	: 2700-6500K
CRI	: Ra>80
Luminous Flux	: 460lm
Waterproof Rating	: IP65



50W Flood Light

HSL-FL01-0050 **CE RoHS**

Power	: 50W
Input Voltage	: AC100-240V
Frequency	: 50/60Hz
CCT	: 2700-6500K
CRI	: Ra>80
Luminous Flux	: 5000lm
Waterproof Rating	: IP65



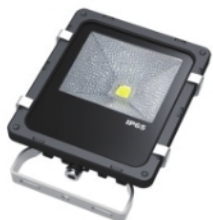
200W Flood Light

HSL-FL01-0200 **CE RoHS**

Power	: 200W
Input Voltage	: AC100-240V
Frequency	: 50/60Hz
CCT	: 2700-6500K
CRI	: Ra>80
Luminous Flux	: 1900lm
Waterproof Rating	: IP65

LED FLOOD Type 2

LED Source COB

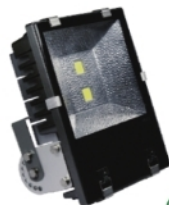


10W Flood Light

HSL-FL02-0010

CE RoHS

Power	: 10W
Input Voltage	: AC100-240V
Frequency	: 50/60Hz
CCT	: 2700-6500K
CRI	: Ra>80
Luminous Flux	: 700lm
Waterproof Rating	: IP65



50W Flood Light

HSL-FL02-0050

CE RoHS

Power	: 50W
Input Voltage	: AC100-240V
Frequency	: 50/60Hz
CCT	: 2700-6500K
CRI	: Ra>80
Luminous Flux	: 3650lm
Waterproof Rating	: IP65

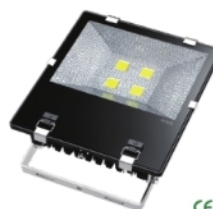


20W Flood Light

HSL-FL02-0020

CE RoHS

Power	: 20W
Input Voltage	: AC100-240V
Frequency	: 50/60Hz
CCT	: 2700-6500K
CRI	: Ra>80
Luminous Flux	: 1500lm
Waterproof Rating	: IP65

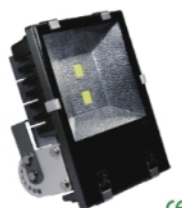


70W Flood Light

HSL-FL02-0070

CE RoHS

Power	: 70W
Input Voltage	: AC100-240V
Frequency	: 50/60Hz
CCT	: 2700-6500K
CRI	: Ra>80
Luminous Flux	: 7000lm
Waterproof Rating	: IP65



30W Flood Light

HSL-FL02-0030

CE RoHS

Power	: 30W
Input Voltage	: AC100-240V
Frequency	: 50/60Hz
CCT	: 2700-6500K
CRI	: Ra>80
Luminous Flux	: 2550lm
Waterproof Rating	: IP65

LED FLOOD Type 2

LED Source COB



100W Flood Light

HSL-FL02-0100 **CE RoHS**

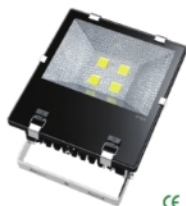
Power :	100W
Input Voltage :	AC100-240V
Frequency :	50/60Hz
CCT :	2700-6500K
CRI :	Ra>80
Luminous Flux :	8000lm
Waterproof Rating :	IP65



200W Flood Light

HSL-FL02-0200 **CE RoHS**

Power :	200W
Input Voltage :	AC100-240V
Frequency :	50/60Hz
CCT :	2700-6500K
CRI :	Ra>80
Luminous Flux :	15000lm
Waterproof Rating :	IP65



150W Flood Light

HSL-FL02-0150 **CE RoHS**

Power :	150W
Input Voltage :	AC100-240V
Frequency :	50/60Hz
CCT :	2700-6500K
CRI :	Ra>80
Luminous Flux :	11250lm
Waterproof Rating :	IP65

LED STADIUM LIGHTS

LED Source COB



100W Stadium Light

HSL-FL03-0100 **CE RoHS**

Power :	100W
Input Voltage :	AC100-240V
Frequency :	50/60Hz
CCT :	2800-7500K
CRI :	Ra>75
Luminous Flux :	13000lm
Waterproof Rating :	IP66



240W Stadium Light

HSL-FL03-0240 **CE RoHS**

Power :	240W
Input Voltage :	AC100-240V
Frequency :	50/60Hz
CCT :	2800-7500K
CRI :	Ra>75
Luminous Flux :	31200lm
Waterproof Rating :	IP66



150W Stadium Light

HSL-FL03-0150 **CE RoHS**

Power :	150W
Input Voltage :	AC100-240V
Frequency :	50/60Hz
CCT :	2800-7500K
CRI :	Ra>75
Luminous Flux :	19500lm
Waterproof Rating :	IP66



300W Stadium Light

HSL-FL03-0300 **CE RoHS**

Power :	300W
Input Voltage :	AC100-240V
Frequency :	50/60Hz
CCT :	2800-7500K
CRI :	Ra>75
Luminous Flux :	39000lm
Waterproof Rating :	IP66



200W Stadium Light

HSL-FL03-0200 **CE RoHS**

Power :	200W
Input Voltage :	AC100-240V
Frequency :	50/60Hz
CCT :	2800-7500K
CRI :	Ra>75
Luminous Flux :	26000lm
Waterproof Rating :	IP66



400W Stadium Light

HSL-FL03-0400 **CE RoHS**

Power :	400W
Input Voltage :	AC100-240V
Frequency :	50/60Hz
CCT :	2800-7500K
CRI :	Ra>75
Luminous Flux :	52000lm
Waterproof Rating :	IP66

LED STADIUM LIGHTS

LED Source COB



500W Stadium Light

HSL-FL03-0500 **CE RoHS**

Power :	500W
Input Voltage :	AC100-240V
Frequency :	50/60Hz
CCT :	2800-7500K
CRI :	Ra>75
Luminous Flux :	65000lm
Waterproof Rating :	IP66



600W Stadium Light

HSL-FL03-0600 **CE RoHS**

Power :	600W
Input Voltage :	AC100-240V
Frequency :	50/60Hz
CCT :	2800-7500K
CRI :	Ra>75
Luminous Flux :	78000lm
Waterproof Rating :	IP66



720W Stadium Light

HSL-FL03-0720 **CE RoHS**

Power :	720W
Input Voltage :	AC100-240V
Frequency :	50/60Hz
CCT :	2800-7500K
CRI :	Ra>75
Luminous Flux :	93600lm
Waterproof Rating :	IP66



1000W Stadium Light

HSL-FL03-1000 **CE RoHS**

Power :	1000W
Input Voltage :	AC100-240V
Frequency :	50/60Hz
CCT :	2800-7500K
CRI :	Ra>75
Luminous Flux :	93600lm
Waterproof Rating :	IP66



1500W Stadium Light

HSL-FL03-1500 **CE RoHS**

Power :	1500W
Input Voltage :	AC100-240V
Frequency :	50/60Hz
CCT :	2800-7500K
CRI :	Ra>75
Luminous Flux :	195000lm
Waterproof Rating :	IP66



2000W Stadium Light

HSL-FL03-2000 **CE RoHS**

Power :	2000W
Input Voltage :	AC100-240V
Frequency :	50/60Hz
CCT :	2800-7500K
CRI :	Ra>75
Luminous Flux :	260000lm
Waterproof Rating :	IP66



4000W Stadium Light

HSL-FL03-4000 **CE RoHS**

Power :	4000W
Input Voltage :	AC100-240V
Frequency :	50/60Hz
CCT :	2800-7500K
CRI :	Ra>75
Luminous Flux :	52000lm
Waterproof Rating :	IP66

LED HighBay

LED Source COB



50W HighBay

HSL-HB01-0050

CE RoHS

Power	: 50W
Input Voltage	: AC100-270V
Frequency	: 50/60Hz
CCT	: 2800-6500K
CRI	: Ra>80
Luminous Flux	: 4750lm
Waterproof Rating	: IP66



100W HighBay

HSL-HB01-0100

CE RoHS

Power	: 100W
Input Voltage	: AC100-270V
Frequency	: 50/60Hz
CCT	: 2800-6500K
CRI	: Ra>80
Luminous Flux	: 9500lm
Waterproof Rating	: IP66



150W HighBay

HSL-HB01-0150

CE RoHS

Power	: 150W
Input Voltage	: AC100-270V
Frequency	: 50/60Hz
CCT	: 2800-6500K
CRI	: Ra>80
Luminous Flux	: 14250lm
Waterproof Rating	: IP66



200W HighBay

HSL-HB01-0200

CE RoHS

Power	: 200W
Input Voltage	: AC100-270V
Frequency	: 50/60Hz
CCT	: 2800-6500K
CRI	: Ra>80
Luminous Flux	: 19000lm
Waterproof Rating	: IP66



300W HighBay

HSL-HB01-0300

CE RoHS

Power	: 300W
Input Voltage	: AC100-270V
Frequency	: 50/60Hz
CCT	: 2800-6500K
CRI	: Ra>80
Luminous Flux	: 285 00lm
Waterproof Rating	: IP66

LED HighBay Emergency

LED Source COB

with Battery



100W HighBay

HSL-HB02-0100

CE RoHS

Power	: 100W
Input Voltage	: AC100-270V
Frequency	: 50/60Hz
CCT	: 2800-6500K
CRI	: Ra>80
Luminous Flux	: (AC 9500lm) (DC 4750lm)
Waterproof Rating	: IP66



200W HighBay

HSL-HB02-0200

CE RoHS

Power	: 200W
Input Voltage	: AC100-270V
Frequency	: 50/60Hz
CCT	: 2800-6500K
CRI	: Ra>80
Luminous Flux	: (AC 19000lm) (DC 10000lm)
Waterproof Rating	: IP66

Street Light Type 1

LED SOURCE COB



HSL-SL01-0060 C E RoHS

Power : 60W
Input Voltage : AC100-264V
Frequency : 50Hz/60Hz
Power > 0.9
CCT : 2800-6500K
CRI : Ra>70
Luminous Flux : 7200lm
Waterproof Rating : IP65



HSL-SL01-0300 C E RoHS

Power : 300W
Input Voltage : AC100-264V
Frequency : 50Hz/60Hz
Power > 0.9
CCT : 2800-6500K
CRI : Ra>70
Luminous Flux : 36000lm
Waterproof Rating : IP65



HSL-SL01-0120 C E RoHS

Power : 120W
Input Voltage : AC100-264V
Frequency : 50Hz/60Hz
Power > 0.9
CCT : 2800-6500K
CRI : Ra>70
Luminous Flux : 14400lm
Waterproof Rating : IP65

Street Light Type 2

LED SOURCE COB



HSL-SL01-0180 C E RoHS

Power : 180W
Input Voltage : AC100-264V
Frequency : 50Hz/60Hz
Power > 0.9
CCT : 2800-6500K
CRI : Ra>70
Luminous Flux : 21600lm
Waterproof Rating : IP65



HSL-SL01-0240 C E RoHS

Power : 60W
Input Voltage : AC100-264V
Frequency : 50Hz/60Hz
Power > 0.9
CCT : 2800-6500K
CRI : Ra>70
Luminous Flux : 28800lm
Waterproof Rating : IP65



HSL-SL02-0050 C E RoHS

Power : 50W
Input Voltage : AC100-264V
Frequency : 50Hz/60Hz
Power > 0.9
CCT : 2800-6500K
CRI : Ra>70
Luminous Flux : 6000lm
Waterproof Rating : IP65



HSL-SL02-0100 C E RoHS

Power : 100W
Input Voltage : AC100-264V
Frequency : 50Hz/60Hz
Power > 0.9
CCT : 2800-6500K
CRI : Ra>70
Luminous Flux : 12000lm
Waterproof Rating : IP65

Street Light Type 2

LED SOURCE COB



HSL-SL02-0150 C E RoHS

Power :	150W
Input Voltage :	AC100-264V
Frequency :	50Hz/60Hz
Power >	0.9
CCT :	2800-6500K
CRI :	Ra>70
Luminous Flux :	15000lm
Waterproof Rating :	IP65

HSL-SL02-0240 C E RoHS

Power :	240W
Input Voltage :	AC100-264V
Frequency :	50Hz/60Hz
Power >	0.9
CCT :	2800-6500K
CRI :	Ra>70
Luminous Flux :	24000lm
Waterproof Rating :	IP65



Street Light Type 3

LED SOURCE COB-Bridgelux



HSL-SL03-0050 C E RoHS

Power :	50W
Input Voltage :	AC100-264V
Frequency :	50Hz/60Hz
Power >	0.9
CCT :	2700-7000K
CRI :	Ra>80
Luminous Flux :	7800lm
Waterproof Rating :	IP65



HSL-SL03-0100 C E RoHS

Power :	100W
Input Voltage :	AC100-264V
Frequency :	50Hz/60Hz
Power >	0.9
CCT :	2700-7500K
CRI :	Ra>80
Luminous Flux :	13000lm
Waterproof Rating :	IP66



HSL-SL03-0150 C E RoHS

Power :	150W
Input Voltage :	AC100-264V
Frequency :	50Hz/60Hz
Power >	0.9
CCT :	2700-7500K
CRI :	Ra>80
Luminous Flux :	18200lm
Waterproof Rating :	IP66



HSL-SL03-0200 C E RoHS

Power :	200W
Input Voltage :	AC100-264V
Frequency :	50Hz/60Hz
Power >	0.9
CCT :	2700-7500K
CRI :	Ra>80
Luminous Flux :	26000lm
Waterproof Rating :	IP66



HSL-SL03-0240 C E RoHS

Power :	240W
Input Voltage :	AC100-264V
Frequency :	50Hz/60Hz
Power >	0.9
CCT :	2700-7500K
CRI :	Ra>80
Luminous Flux :	31200lm
Waterproof Rating :	IP66

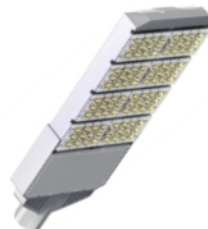
Street Light Type 3

LED SOURCE COB-Bridgelux



HSL-SL03-0320 C E RoHS

Power : 150W
Input Voltage : AC100-264V
Frequency : 50Hz/60Hz
Power > 0.9
CCT : 2700-7500K
CRI : Ra>80
Luminous Flux : 41600lm
Waterproof Rating : IP66



HSL-SL04-0240 C E RoHS

Power : 240W
Input Voltage : AC100-264V
Frequency : 50Hz/60Hz
Power > 0.9
CCT : 2700-6500K
CRI : Ra>70
Luminous Flux : 27000lm
Waterproof Rating : IP65

Street Light Type 4

LED SOURCE SMD-Bridgelux



HSL-SL04-0150 C E RoHS

Power : 150W
Input Voltage : AC100-264V
Frequency : 50Hz/60Hz
Power > 0.9
CCT : 2700-6500K
CRI : Ra>80
Luminous Flux : 31200lm
Waterproof Rating : IP65



HSL-SL04-0300 C E RoHS

Power : 200W
Input Voltage : AC100-264V
Frequency : 50Hz/60Hz
Power > 0.9
CCT : 2700-6500K
CRI : Ra>70
Luminous Flux : 40500lm
Waterproof Rating : IP65



HSL-SL04-0200 C E RoHS

Power : 200W
Input Voltage : AC100-264V
Frequency : 50Hz/60Hz
Power > 0.9
CCT : 2700-6500K
CRI : Ra>70
Luminous Flux : 20250lm
Waterproof Rating : IP65

Street Light Type 5

LED SOURCE COB-Bridgelux



HSL-SL05-0050 **CE RoHS**

Power : 50W
Input Voltage : AC100-264V
Frequency : 50Hz/60Hz
Power > 0.9
CCT : 3000-5000K
CRI : Ra>70
Luminous Flux : 6000lm
Waterproof Rating : IP65



HSL-SL05-0100 **CE RoHS**

Power : 100W
Input Voltage : AC100-264V
Frequency : 50Hz/60Hz
Power > 0.9
CCT : 3000-5000K
CRI : Ra>70
Luminous Flux : 12000lm
Waterproof Rating : IP65



HSL-SL05-0160 **CE RoHS**

Power : 160W
Input Voltage : AC100-264V
Frequency : 50Hz/60Hz
Power > 0.9
CCT : 3000-5000K
CRI : Ra>70
Luminous Flux : 18000lm
Waterproof Rating : IP65



HSL-SL05-0200 **CE RoHS**

Power : 200W
Input Voltage : AC100-264V
Frequency : 50Hz/60Hz
Power > 0.9
CCT : 3000-5000K
CRI : Ra>70
Luminous Flux : 20000lm
Waterproof Rating : IP65

Solar Street Light

LED SOURCE SMD-Bridgelux



HSL-SSL01-0060 **CE RoHS**

Power : 60W
Input Voltage : AC100-264V
Frequency : 50Hz/60Hz
Power > 0.9
CCT : 2700-6500K
CRI : Ra>70
Luminous Flux : 7800-8400lm
Waterproof Rating : IP65



HSL-SSL01-0080 **CE RoHS**

Power : 80W
Input Voltage : AC100-264V
Frequency : 50Hz/60Hz
Power > 0.9
CCT : 2700-6500K
CRI : Ra>70
Luminous Flux : 10400 -11200lm
Waterproof Rating : IP65

LED RETRO FIT KIT LIGHTS

LED Source CREE SMD



35W RETRO FIT Light 14PCS CREE 14PCS CREE SMD

HSL-RK01-0035 **CE RoHS**

Power :	35W
Input Voltage :	AC100-277V
Frequency :	50/60Hz
CCT :	2700-8000K
CRI :	Ra>70
Luminous Flux :	3300-3600lm



65W RETRO FIT Light 28PCS CREE SMD

HSL-RK01-0065 **CE RoHS**

Power :	65W
Input Voltage :	AC100-277V
Frequency :	50/60Hz
CCT :	2700-8000K
CRI :	Ra>70
Luminous Flux :	6400-6800lm



45W RETRO FIT Light 21PCS CREE SMD

HSL-RK01-0045 **CE RoHS**

Power :	45W
Input Voltage :	AC100-277V
Frequency :	50/60Hz
CCT :	2700-8000K
CRI :	Ra>70
Luminous Flux :	4300-4500lm



80W RETRO FIT Light 42PCS CREE SMD

HSL-RK01-0080 **CE RoHS**

Power :	80W
Input Voltage :	AC100-277V
Frequency :	50/60Hz
CCT :	2700-8000K
CRI :	Ra>70
Luminous Flux :	7800-8300lm



60W RETRO FIT Light 28PCS CREE SMD

HSL-RK01-0060 **CE RoHS**

Power :	60W
Input Voltage :	AC100-277V
Frequency :	50/60Hz
CCT :	2700-8000K
CRI :	Ra>70
Luminous Flux :	5900-6100lm



105W RETRO FIT Light 49PCS CREE SMD

HSL-RK01-0035 **CE RoHS**

Power :	105W
Input Voltage :	AC100-277V
Frequency :	50/60Hz
CCT :	2700-8000K
CRI :	Ra>70
Luminous Flux :	9800-10500lm

LED RETRO FIT KIT LIGHTS

LED Source CREE SMD



120W RETRO FIT Light 56PCS CREE SMD

HSL-RK01-0120 **CE RoHS**

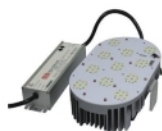
Power :	120W
Input Voltage :	AC100-277V
Frequency :	50/60Hz
CCT :	2700-8000K
CRI :	Ra>70
Luminous Flux :	11800-12500lm



240W RETRO FIT Light 112PCS CREE SMD

HSL-RK01-0240 **CE RoHS**

Power :	240W
Input Voltage :	AC100-277V
Frequency :	50/60Hz
CCT :	2700-8000K
CRI :	Ra>70
Luminous Flux :	24800-25000lm



150W RETRO FIT Light 77PCS CREE SMD

HSL-RK01-0150 **CE RoHS**

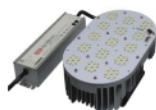
Power :	150W
Input Voltage :	AC100-277V
Frequency :	50/60Hz
CCT :	2700-8000K
CRI :	Ra>70
Luminous Flux :	14800-15500lm



320W RETRO FIT Light 154PCS CREE SMD

HSL-RK01-0320 **CE RoHS**

Power :	320W
Input Voltage :	AC100-277V
Frequency :	50/60Hz
CCT :	2700-8000K
CRI :	Ra>70
Luminous Flux :	32000-36000lm



200W RETRO FIT Light 105PCS CREE SMD

HSL-RK01-0200 **CE RoHS**

Power :	200W
Input Voltage :	AC100-277V
Frequency :	50/60Hz
CCT :	2700-8000K
CRI :	Ra>70
Luminous Flux :	19800-21000lm



400W RETRO FIT Light 210PCS CREE SMD

HSL-RK01-0400 **CE RoHS**

Power :	400W
Input Voltage :	AC100-277V
Frequency :	50/60Hz
CCT :	2700-8000K
CRI :	Ra>70
Luminous Flux :	39500-43000lm

LED TRI-PROOF LIGHT

LED Source SMD



20W LED Tri-proof Light

HSL-TPL01-0020 **CE RoHS**

Power :	20W
Input Voltage :	AC100-240V
Frequency :	50/60Hz
CCT :	2000-6000K
CRI :	Ra>80
Luminous Flux :	1800lm
Waterproof Rating :	IP65

40W LED Tri-proof Light

HSL-TPL01-0040 **CE RoHS**

Power :	40W
Input Voltage :	AC100-240V
Frequency :	50/60Hz
CCT :	2000-6000K
CRI :	Ra>80
Luminous Flux :	3600lm
Waterproof Rating :	IP65

LED LINEAR LIGHT

LED Source COB



8W LED Wall Washer

HSL-LL01-0008 **CE RoHS**

Power :	8W
Input Voltage :	AC100-240V
Frequency :	50/60Hz
CCT :	3000-6000K
CRI :	Ra>80
Luminous Flux :	800-950lm
Waterproof Rating :	IP65

20W LED Wall Washer

HSL-LL01-0020 **CE RoHS**



Power :	20W
Input Voltage :	AC100-264V
Frequency :	50Hz/60Hz
CCT :	3000-6000K
CRI :	Ra>70
Luminous Flux :	2000 -2250lm
Waterproof Rating :	IP65

White Light Strip

HSL-00-0001 **LED Source SMD**

Image	Package Spec.	Power	Input Voltage	CRI & CCT	Lumen	Waterproof Rating
	2835 120 pkg/m	18W	AC100 240V 50/60Hz	Ra>80 6000 6500K	1350 lm/m	IP67 Rubber Tube

Accessories



Power Cord for LED Strip

Capable of Driving Up to 100m of LED Strip

Input Voltage : 120V/220V

Frequency : 50Hz/60Hz

Power Output : DC 220V

Cover Pattern : Various



Pin



End Cap



Clamp



Interconnection Dock